

FROM SPRAWL  
TO CELLS

The formation of the urban cells is a process to be triggered, accompanied, and controlled, a goal that can be reached only in a medium to long time frame. Each cell operates in a bottom-up vision that benefits from direct intervention by the local community, permitting a maximization of diversity and innovation. The centralized level does not completely disappear but changes in scope and function; it operates as a mediator and facilitator between the different cells, favoring productive dialogues and exchanges, while defining and constructing the connective tissue of the city with key issues such as infrastructures and green areas.

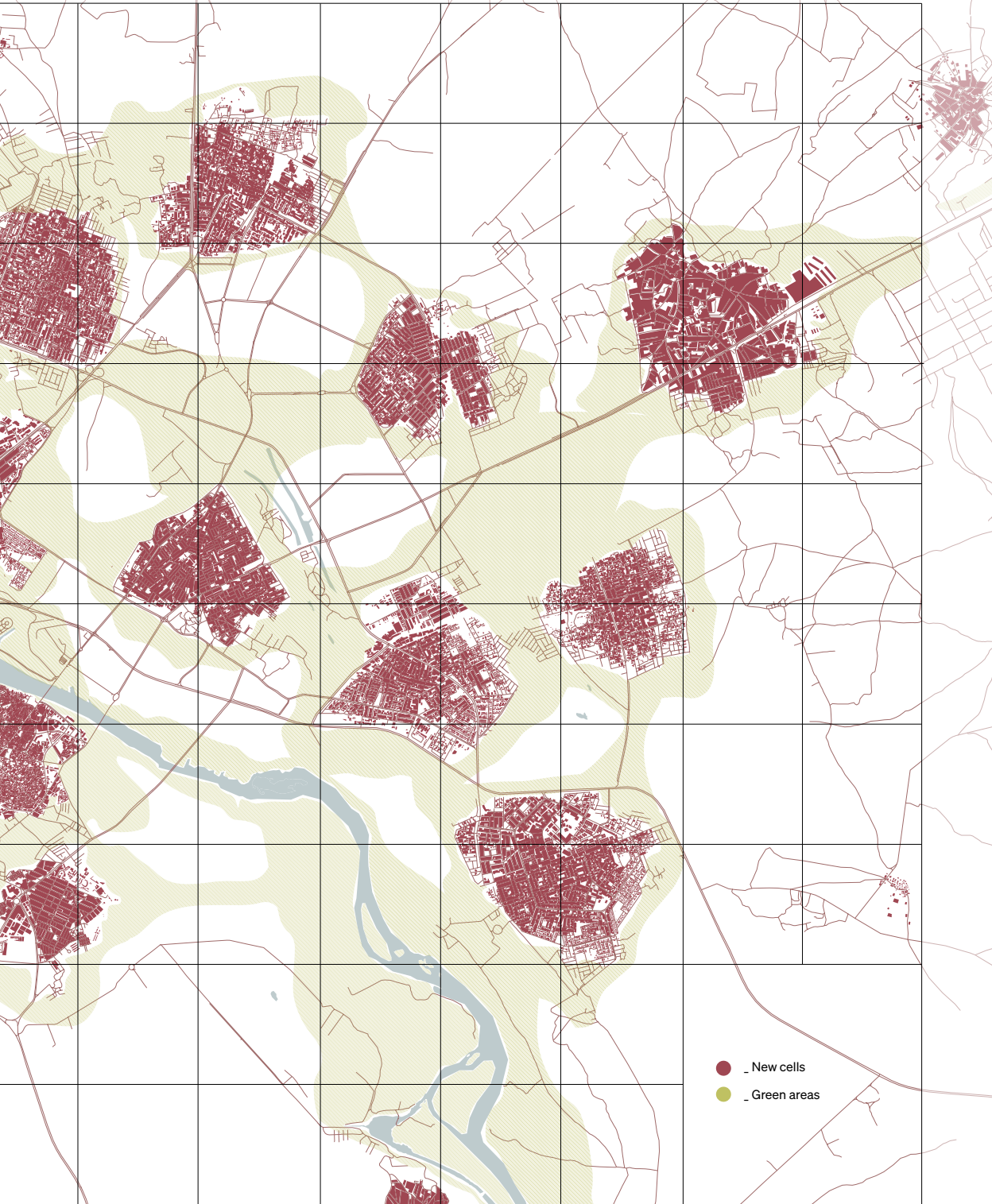


MOSUL / IRQ FUTURE



AREAS	PERCENTAGE
. New cells	26.17
. Green areas	73.83

A DESIGN STRATEGY FOR URBAN RECONSTRUCTION



- \_ New cells
- \_ Green areas